

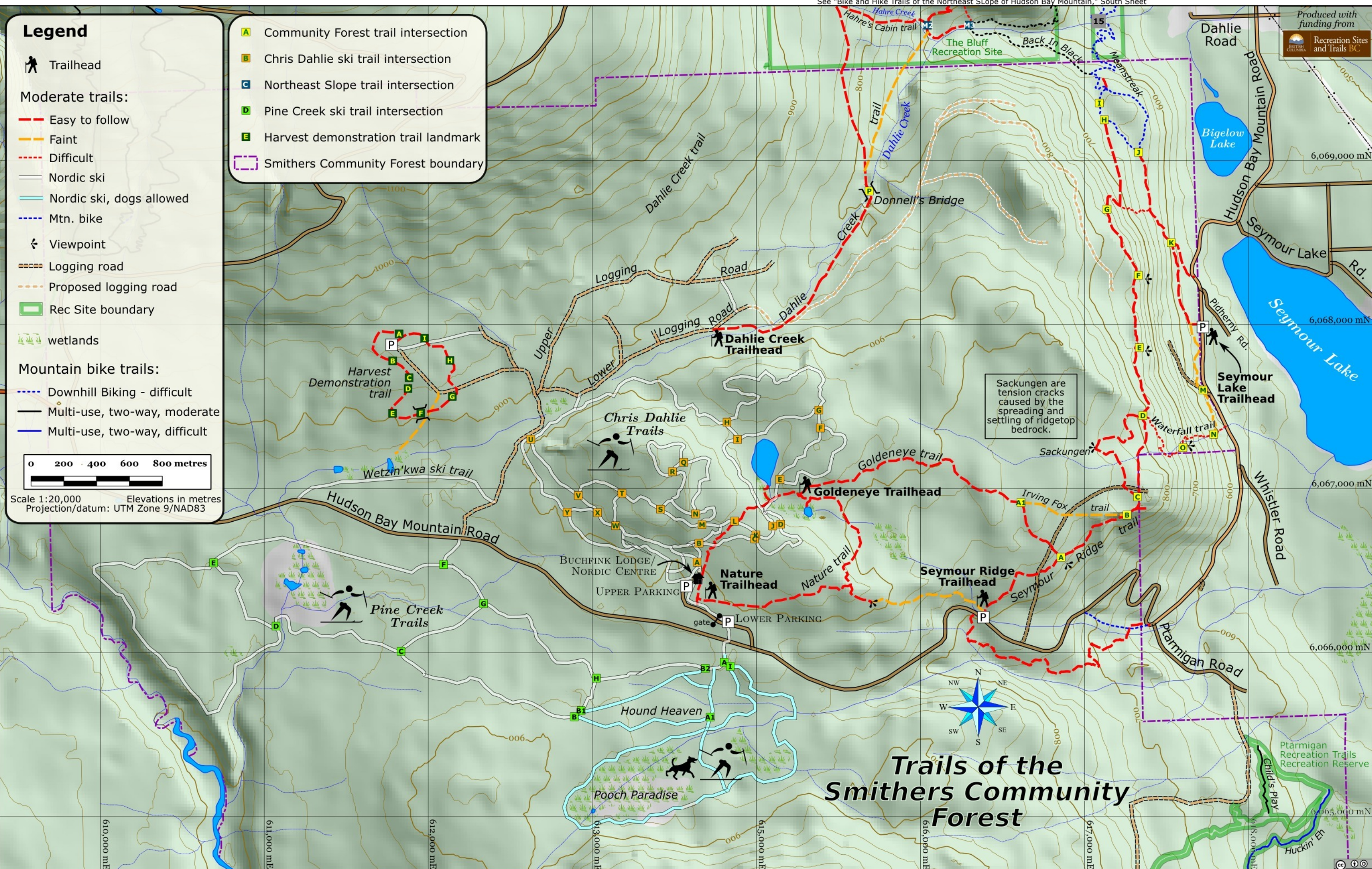
### Legend

- Trailhead
- Moderate trails:**
  - Easy to follow
  - Faint
  - Difficult
  - Nordic ski
  - Nordic ski, dogs allowed
  - Mtn. bike
  - Viewpoint
  - Logging road
  - Proposed logging road
  - Rec Site boundary
  - wetlands
- Mountain bike trails:**
  - Downhill Biking - difficult
  - Multi-use, two-way, moderate
  - Multi-use, two-way, difficult

- Community Forest trail intersection
- Chris Dahlie ski trail intersection
- Northeast Slope trail intersection
- Pine Creek ski trail intersection
- Harvest demonstration trail landmark
- Smithers Community Forest boundary

0 200 400 600 800 metres

Scale 1:20,000 Elevations in metres  
Projection/datum: UTM Zone 9/NAD83



## Trails of the Smithers Community Forest